



INSTITUTE FOR A COMPETITIVE WORKFORCE

Business Engagement

Greg Roth

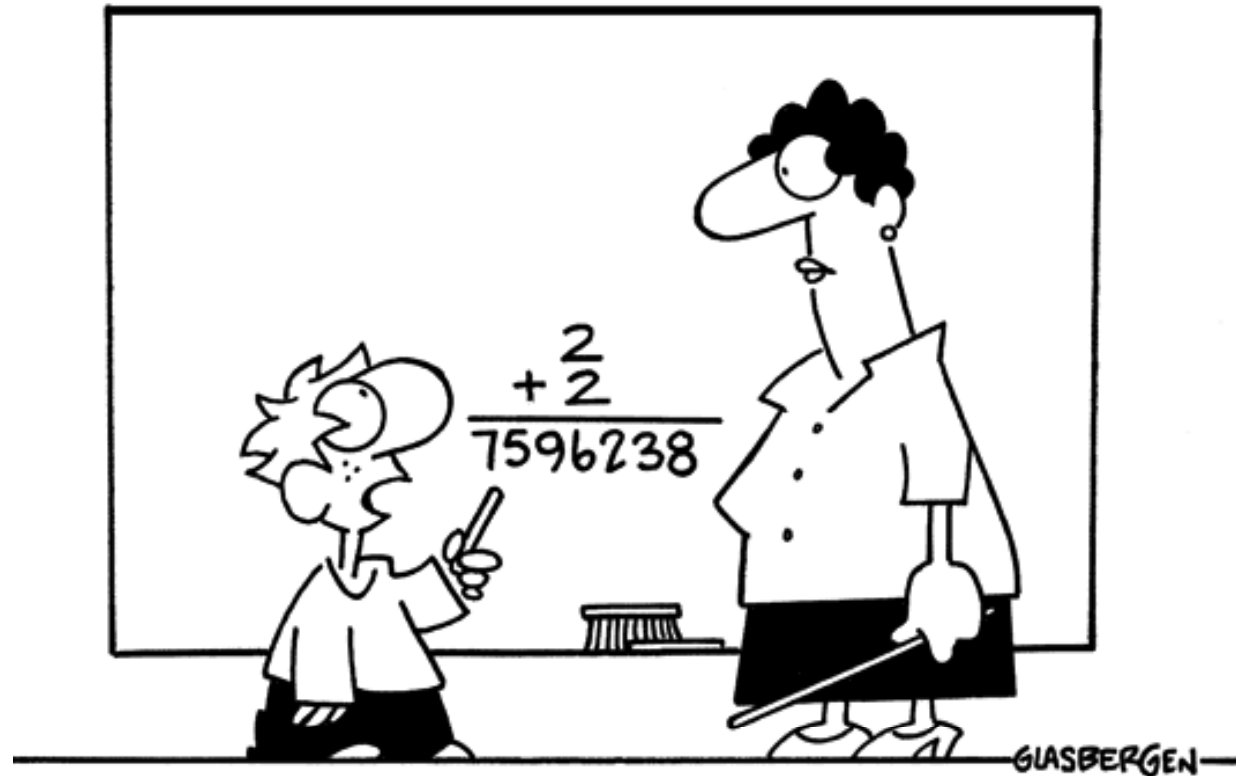
Institute for a Competitive Workforce

U.S. Chamber of Commerce

An Affiliate of the
U.S. Chamber of Commerce



Copyright 2005 by Randy Glasbergen. www.glasbergen.com



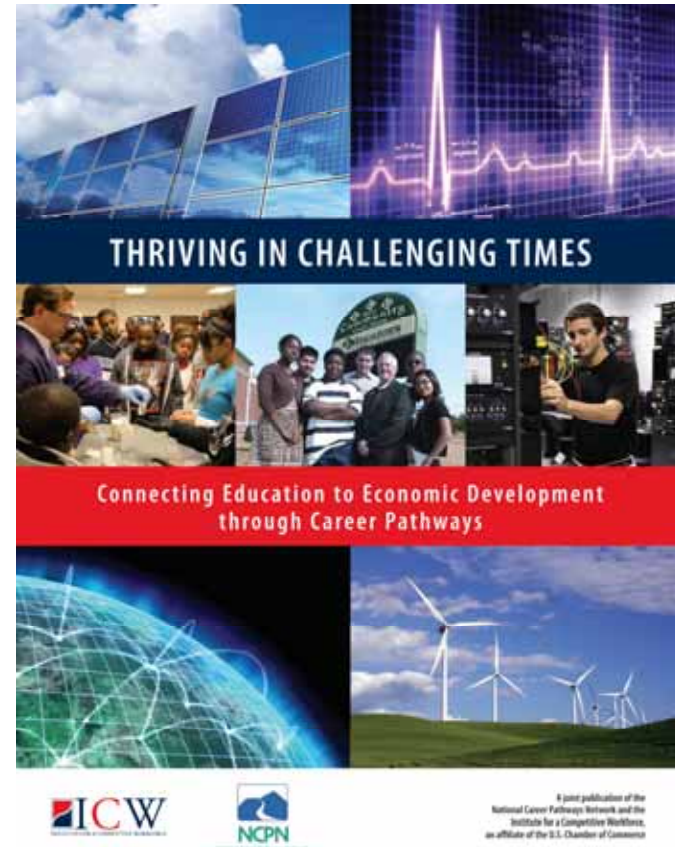
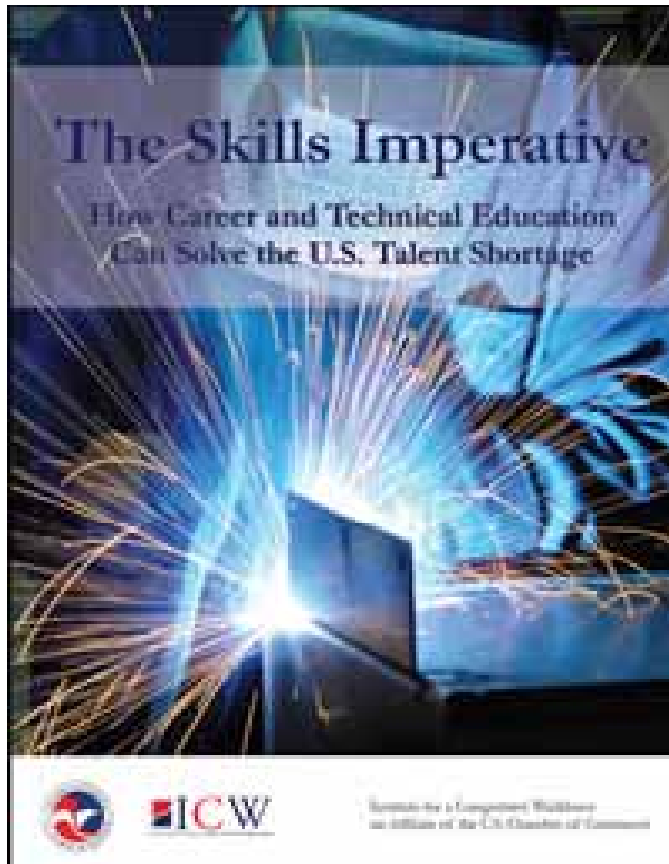
**“In an increasingly complex world, sometimes
old questions require new answers.”**

An Affiliate of the
U.S. Chamber of Commerce





INSTITUTE FOR A COMPETITIVE WORKFORCE



An Affiliate of the U.S. Chamber of Commerce



Challenging Times

- High school dropout rates at 30%
- Nearly 50% of dropouts say they aren't interested in or challenged by school
- U.S. post-secondary dropout rate one of the highest in the industrialized world
- About 50% of college students require remediation

Principles of CTE

- Career and post-secondary readiness
- Rigorous
- Relevant
- Project-based
- Effective

Essential Role of Employers in Career Pathways

- *Advisory councils and funding*
- Career awareness
- Opportunities for students
- Teacher development
- Resources for programs
- Expertise and judging

Business Engagement in CTE

- *Programs*, i.e. curriculum, awareness, etc
- *Students*, i.e. apprenticeships, internships
- *Teachers*, i.e. externships, career-to-teach
- *Policies*, i.e. state and local chambers

Aerospace

- Business personnel contribute by participating in program advisory committees;
- Donating materials and supplies used in the labs;
- Donating funds, equipment, and time on equipment in their own labs;
- Providing students with **career development opportunities**, including the ethics competition, **mock interviews**, and internships.

Biotechnology

- During the internship phase, the program receives direct input from industry professionals who help to shape the curriculum.
- Each internship experience involves site visits during which **student interns, program staff, and internship supervisors** have the opportunity to give and receive feedback about the program.
- Laboratory supervisors who want to gain teaching experience are given opportunities to teach Bridge internship classes .

Construction

- The Pacific Resource Partnership (PRP) is a joint program of Hawai`i's unionized building contractors and the Hawai`i Carpenters' Union.
- PRP has been instrumental in **supporting legislation** and funding for the Construction Academy.
- Also provides educational opportunities for teachers through a summer internship program.

Health Care

Employer and community partners support Career Ready Council activities by

- participating in career fairs
- site tours
- job-shadowing activities
- the internship program and CO-OP opportunities
- **teaching business attire, etiquette, and communication skills prior to worksite visits**

Nuclear Energy

- Participating students who choose engineering studies often gain corporate sponsorship.
- Of the initial 144 students, 73 received some form of pay, tuition reimbursement, or similar benefits.
- Students who are not corporately sponsored **compete for abundant merit-based scholarship funding.**



INSTITUTE FOR A COMPETITIVE WORKFORCE

Business Messaging on CTE

Talk to them in terms that matter to them.

“This initiative will result in higher numbers of young people who graduate from high school with the skills that they need for success in school, work, and life.”

An Affiliate of the
U.S. Chamber of Commerce



Career Pathways Results

- Higher graduation rates
- Higher enrollment in postsecondary programs
- Better informed students ready to make career choices
- Direct link to workplace and employment



INSTITUTE FOR A COMPETITIVE WORKFORCE

Contact Information

Greg Roth

Senior Manager, Education and Workforce Programs

Institute for a Competitive Workforce

U.S. Chamber of Commerce

1615 H Street NW

Washington, DC 20062

Phone: 202-463-5703

groth@uschamber.com

www.uschamber.com/icw

An Affiliate of the
U.S. Chamber of Commerce

